

The image is a collage. The top half features a large central photograph of a tent in a refugee camp, with smaller photos of people and tents on the sides. The bottom half features a large photograph of a donkey in a dry, dusty environment. A horizontal banner with a black and orange background is positioned across the middle.

shelter centre

Annual Report 2007



Shelter Centre

Shelter Centre is a non-governmental organisation which supports the sector of humanitarian operations that responds to the transitional settlement and reconstruction needs of populations affected by conflicts and natural disasters, from the emergency phase until durable solutions are reached.

All Shelter Centre activities are designed and maintained so that the maximum number of sector stakeholders participate in their development and benefit from their outputs.

Many activities are funded through a programme with DFID, 2006–2011, while others are funded bilaterally or multi-laterally.

Shelter Centre partners in the sector include United Nations bodies, the Red Cross Movement, international organisations, non-governmental organisations, academic and research groups, as well as donors.

As a sector support NGO, Shelter Centre builds collaboration, consensus and capacity through developing and maintaining:

- strategic or policy guidelines;
- technical guidelines;
- technical training;
- community of practice services; and
- the global forum for the sector.

Collaboration



Shelter Meeting



Shelter Funding



ESC Non-Food Items Standards Project



Shelter Standards and Module

Consensus



Transitional Settlement and Reconstruction After Natural Disasters



Camp Planning Guideline



Shelter Library

Capacity



Shelter Training



Shelter Community



Shelter Interns

Table of contents

The shelter sector	2
Directors' report	4
Partners	6

Collaboration 8

Shelter Meeting	8
Shelter Funding	10
ESC Non-Food Items Standards Project	11
Shelter Standards and Module	12

Consensus 14

Transitional Settlement and Reconstruction After Natural Disasters	14
Camp Planning Guidelines	15
Shelter Library	16

Capacity 18

Shelter Training	18
Shelter Community	20
Shelter Interns	22

Shelter Centre's new web platform	24
Participation in other initiatives during 2007	26
Timeline: Shelter Centre activities in 2007	28
Shelter Centre finances in 2007	30
Shelter Centre 2007	32



The shelter sector

Shelter and settlements are often damaged or destroyed by conflicts and disasters, impacting protection, the management of risk and the rate of recovery to sustainable livelihoods. Over the eight years between 2000 and 2007, the humanitarian community only met 29 per cent of the total financial need within the shelter and non-food items sector, compared with 83 per cent of total need met in the food sector. This need was felt by the 34.4 million people who were displaced in 2006 alone, in 305 camps and centres as well as 460 urban locations worldwide, and by the many more who were not displaced.

Mitigating damage and destruction often impacts upon the collaboration between international and government stakeholders in national reconstruction, upon the sustainability of assistance and gradual handover to developmental stakeholders, and upon the form and effectiveness of response by other humanitarian sectors and cross-cutting concerns. A decision to support host families as well as refugee camps may impact national and even regional security and protection, water availability, environmental resource management, livelihoods, and health of both the displaced and their hosts. Smoke from solid fuel, for example, presents the fourth greatest risk of death and disease in the world's poorest countries, killing more than 1.5 million people each year.

Understanding these statistics and the interdependence of response has prompted the humanitarian and development communities to reassess the emphasis placed upon the shelter sector in their structures and capacities.



This re-consideration has highlighted challenges within and between these communities. Within the humanitarian community, the Humanitarian Response Review initiated by the United Nations Emergency Relief Coordinator resulted in the Clusters Approach of the Inter-Agency Standing Committee, an approach which continues to respond to these challenges.

The contribution offered by Shelter Centre is to the community of practice of all stakeholders in the sector, integrating Shelter Centre outputs and services in support of collaboration, consensus and capacity.

Collaboration

The goal of increasing collaboration is supporting sector stakeholders in maximising impacts and minimising overlaps in their response.

Consensus

The goal of achieving consensus is supporting sector stakeholders in maximising consistency and equity in their response.

Capacity

The goal of building capacity is in supporting sector stakeholders in maximising quality and continuity in their response.



Goré
Chad

shelter centre

Chalang
Indonesia

Bangalore
India

Directors' report

Events in 2007 demonstrated the ongoing need for the transitional settlement and reconstruction activities of our partners, with major natural disasters including a continuing humanitarian emergency in the Darfur region, the earthquake in Peru in August, and hurricanes in Central America. Responses emphasised once again the opportunities for supporting collaboration, consensus and capacity within the sector.

In our role as a sector support NGO, we continued our work with our partners to identify common priorities in the shelter sector, and then to develop and maintain together appropriate responses.

Over 2007 we achieved a solid foundation to our programme of sector support activities with DFID, within the 2006–2011 programme, and built upon complementary project collaborations with partners, including the Emergency Shelter Cluster of the IASC for response in disaster situations.

The biannual Shelter Meetings in May and November developed the global sector forum through increasing participation, especially by implementing NGOs. This sectoral development was achieved through reviewing a greater number of collaborative projects, and through supporting engagement with new initiatives, such as with the five IASC Clusters most relevant to the sector, Camp Coordination and Camp Management, Early Recovery, Emergency Shelter, Protection, and Water Sanitation and Hygiene.



Participants at 2007 Shelter Meetings were able also to review Shelter Centre projects, including the development with Médecins Sans Frontières of the Camp Planning Guidelines.

In a productive collaboration with the Logistics Support Unit of the United Nations Office for the Coordination of Humanitarian Affairs (UN/OCHA), we revised their key sectoral guidelines to be published in May 2008 as *Transitional Settlement and Reconstruction After Natural Disasters*. The committed peer review panel included UN, Red Cross Movement, international organisation, NGO and donor representation.

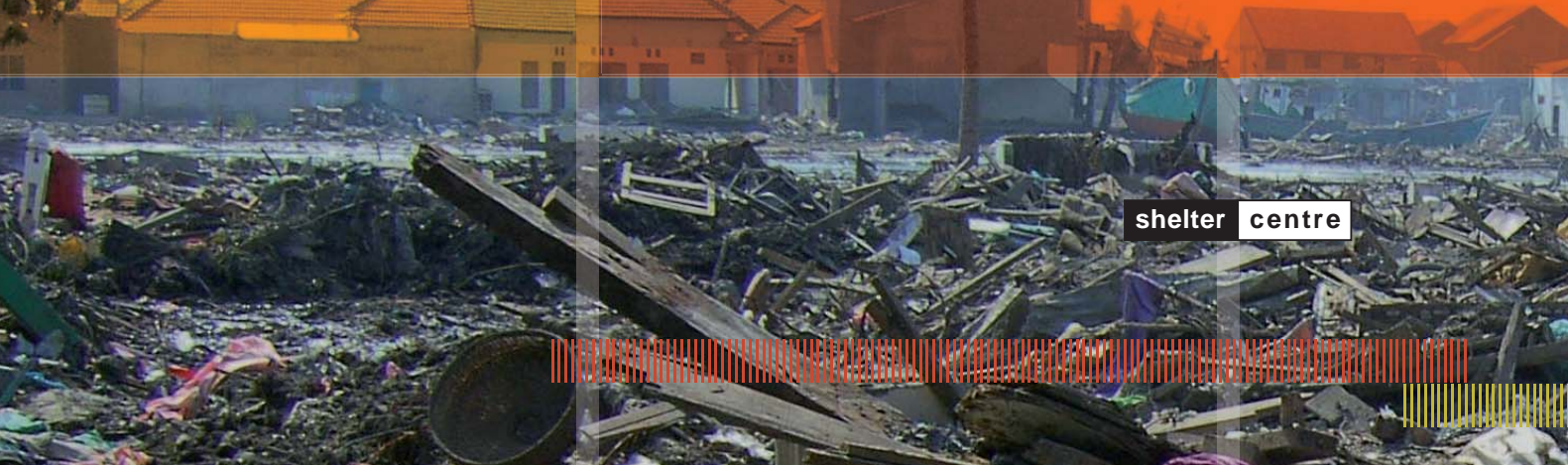
As a partner in the Emergency Shelter Cluster, we successfully developed and delivered its 'Training for Technical Specialists', which we developed subsequently in 2008 into consistent training programmes for the IFRC and then the sector as a whole.

In 2008, we look forward to continuing to support our partners, and to develop with them new ways to improve our services. To this end, the operating base of Shelter Centre will transfer permanently from the UK to Switzerland.

Tom Corsellis
Co-Director

May 2008

Antonella Vitale
Co-Director



Partners

The following agencies attended the twice yearly Shelter Meeting in 2007.

Government representatives

Government of Maharashtra, India
Mission of Norway in Geneva

Humanitarian bi-lateral and multi-lateral donors

Department For International Development Conflict and Humanitarian Affairs Department
Operations Team (DFID CHAD-OT)
European Commission Humanitarian aid Office (ECHO)
Japan International Cooperation Agency (JICA)
United States Agency for International Development/Office of the United States Foreign
Disaster Assistance (USAID/OFDA)
Swiss Agency for Development and Cooperation/Swiss Humanitarian Aid Unit (SDC/HA)

International organisations

International Organization for Migration (IOM)

Inter Agency Standing Committee (IASC) Clusters

Camp Coordination and Camp Management (CCCM)
Emergency Shelter Cluster (ESC)
Early Recovery
Logistics
Protection
Water Sanitation and Hygiene (WASH)

United Nations bodies

United Nations Development Programme (UNDP)
United Nations Environment Programme (UNEP)
United Nations High Commissioner for Refugees (UNHCR)
United Nations Human Settlements Programme (UN-Habitat)
United Nations International Strategy for Disaster Reduction (UN/ISDR)
United Nations Joint Logistics Centre (UNJLC)
United Nations Office for Project Services (UNOPS)
United Nations Office for the Coordination of Humanitarian Affairs (UN/OCHA)



Banda Aceh
Indonesia

Red Cross / Red Crescent Movement

International Committee of the Red Cross (ICRC)
International Federation of Red Cross and Red Crescent Societies (IFRC)
American Red Cross
Australian Red Cross
French Red Cross
Netherlands Red Cross
Norwegian Red Cross
Spanish Red Cross

Non-governmental organisations

Architects for Aid
Architectes Sans Frontières (ASF)
CartONG
Catholic Agency For Overseas Development (CAFOD)
CARE International
Caritas Austria
Catholic Relief Services (CRS)

Cooperative Housing Foundation (CHF)
Engineers Without Borders (EWB)

GOAL

Habitat for Humanity
Islamic Relief
Médecins Sans Frontières, Belgium (MSF-B)
Médecins Sans Frontières, Netherlands (MSF-H)
Médecins Sans Frontières, Switzerland (MSF-CH)
Médecins Sans Frontières, (MSF-International)
Muslim Aid
Norwegian Refugee Council (NRC)
Oxfam GB
Practical Action
ProVention Consortium
Registered Engineers for Disaster Relief (RedR)
Save The Children Fund (SCF)
Shelter for Life (SFL)
The Sphere Project

Swiss Solidarity
Shelter for Life (SFL)
The Sphere Project
Swiss Solidarity
Urbanistes Sans Frontières
World Vision

Observing organisations

AMURT International
Architecture & Développement
Benfield Hazard Research Centre, UCL
Caritas Switzerland
Centre On Housing Rights and Evictions (COHRE)
European Commission
Overseas Development Institute (ODI)
RESET
Royal Institute of Chartered Surveyors (RICS)
World Shelters



Participants at Shelter Meeting



Shelter Meeting

Part of the DFID programme with Shelter Centre

collaboration

The Shelter Meeting is the global forum for stakeholders in the sector, hosted in Geneva each May and November.

The Shelter Meeting is a regular global event for stakeholders to meet as a community of practice and progress responding to shelter following conflicts and disasters, from the emergency through return until the completion of reconstruction.

At the meetings, the agencies participating:

- **identify and review collaborative projects**, including the development of guidelines and operational tools, including all Shelter Centre projects but with the majority led by other agencies;
- **share good practice**, both in ongoing operations, and in technical approaches to response, such as upgrading camps and the use of geographic information systems;
- **offer updates on related events and initiatives**, such as progress by IASC clusters, and other meetings or projects relevant to the sector; and
- **focus upon priority themes**, whether relating to a specific region of current operations, or to an emerging or neglected sector activity, such as reconstruction or cash assistance.

Shelter Meetings bring together United Nations bodies, the Red Cross Movement, international organisations, non-governmental organisations, academic and research groups, as well as donors, usually represented by the individuals with the final responsibility for shelter within their agency.

Shelter Meeting 07a

31st May and 1st June 2007

Hosted by the International Organization for Migration.

SM07a was attended by 46 participants and 25 observers from: 7 UN bodies; 5 members of the Red Cross Movement; 1 international organisation; 22 NGOs; 3 academic and research groups; and 2 donors.

Contributions at SM07a included:

- the launch of guidelines on plastic sheeting, developed as a collaboration between Oxfam and IFRC;
- the announcement by UN/OCHA of the development of guidelines on the use of timber;
- presentations on good practice in Sudan, Indonesia and Pakistan by UNJLC, Oxfam, IFRC and UN-Habitat; and
- updates from the Camp Coordination and Camp Management, Emergency Shelter, Early Recovery and Protection Clusters, in support of the IASC humanitarian reform process.

In addition, in order to maximise attendance and impact of both events, over the three days before the meeting Shelter Centre delivered training for technical specialists on behalf of the IASC Emergency Shelter Cluster, enabling most of those participating in the training to attend the meeting.

Shelter Meeting 07b

15th and 16th November 2007

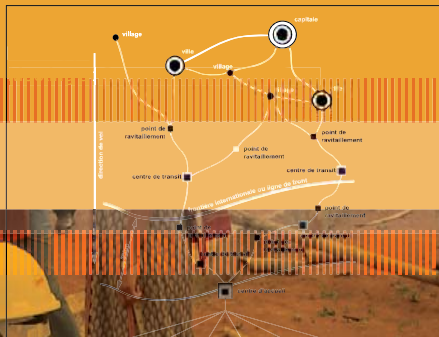
Hosted by the Norwegian Refugee Council.

SM07b was attended by 50 participants and 22 observers from: 6 UN bodies; 4 members of the Red Cross Movement; 1 government; 17 NGOs; 8 academic and research groups; and 3 donors.

Contributions at SM07b included:

- a preview launch by UN/ISDR of Preventionweb and the announcement by UNHCR that it will develop a winterised tent, as part of its presentation of its survey of winterised tents;
- the discussion in breakout groups of the ESC coordination toolkit, NFI project, and performance management system; as well as of the development of guidelines on protection, shelter after disaster and camp planning chaired by UNHCR, UN/OCHA and MSF;
- presentations on good practice in property restitution and the use of GIS in camp planning by NRC and CartONG; as well as responses in Peru by IFRC and Mozambique by UN-Habitat; and
- presentations on project applications for Shelter Funding by CARE and ProAct; as well as presentations by consultants on their progress in developing toolkits for the development with Shelter Centre of the UN/OCHA guidelines *Transitional Settlement and Reconstruction After Natural Disasters*.

Tom Corsellis et Antonella Vitale



Bangalore
India



Part of the DFID Programme with Shelter Centre

collaboration

Identification of projects

Eligible organisations and networks

Shelter Funding in 2007

In addition, Shelter Centre received applications and expressions of interest for projects in support of:

- delivering sector training, including training as part of operations;
- guidance on achieving funding for operational shelter programmes;
- guidance on the use of asbestos in construction; and
- guidance on the re-use and disposal of construction waste.



Abeche
Chad



ESC Non-Food Items Standards Project

collaboration

This project contributes to the 'Common Emergency Shelter and Non-Food Items Standards' and 'Guidelines for climatic variations' components of the 2007–2008 Working Group Work Plan of the IASC Emergency Shelter Cluster.

The focal agencies for the project are Shelter Centre and UNHCR. The project partners are CARE International, IFRC, the Norwegian Refugee Council and UN/OCHA, within which group IFRC, UNHCR and UN/OCHA offer their contributions to the project in-kind.

The purpose of the project is to develop, with stakeholders in the shelter sector, consensus guidance both on the variety of NFIs available, and on their combination and distribution, including in packages or kits. The project aims to support appropriate, coordinated, consistent and equitable support to conflict and disaster-affected populations. This guidance will cover responses in different climates.

Activities in 2007

Shelter Centre initiated the study of climatic and cultural considerations in NFI distribution and use, as well as building linkages with parallel initiatives, such as in the IASC WASH cluster. With the support of Shelter Centre through facilitation, CARE undertook a preliminary survey of common shelter NFI packages appropriate both for different types of response and for different climates. At the same time, NRC undertook a preliminary survey of common specifications for the most widely used shelter NFIs, consistent with and in support of existing standards and stockpiling frameworks.

Developments in 2008

The guidance will be developed and reviewed for completion and launch in November.



Shelter Standards and Module

Part of the DFID Programme with Shelter Centre
and supported by a grant from USAID/OFDA

collaboration

The aim of the Shelter Standards project was for the main humanitarian stakeholders to achieve agreement on common standards and indicators for stockpiled family shelters, such as tents. The parallel Shelter Module project aimed to develop a prototype family shelter that demonstrates how the Standards may be met.

In October 2007, agreement was reached and the resulting Shelter Standards prepared for launch in January 2008. In the Shelter Module project, a frame structure was developed and tested between June and September that met the Standards. The frame was easy to repair and adapt and was of sufficient strength to withstand the agreed ranges of wind and snow loading.

In meetings 2004–2006, the Shelter Standards project consortium identified that there is currently both a lack of consistency in the family shelters used by different humanitarian agencies in operations, and a lack of coordinated research and development to improve options available.

There are no common standards in use to support consistency and appropriateness, apart from a draft version of the Shelter Standards published by UN/OCHA in *Tents. A guide to the use and logistics of family tents in humanitarian relief* (2004). Common production specifications were published by IAPSO in 2000 for cotton canvas tents only. The minimum standards of the Sphere Project act as a basis to the Shelter Standards, which are more detailed.

The commercial sector requires from the international community clear standards and indicators of shelter requirements in order to engage productively in research and development.

Agreeing standards among stakeholders

The project brings together major donor, UN, Red Cross, international organisation and NGO stakeholders funding, stockpiling and distributing family shelters to agree standards on logistical requirements, such as total weight and packed size; physical requirements, such as integrity and durability; and social requirements, such as privacy and buildability.

Developments 2008–2011

In January 2008 the draft standards were released to manufacturers at the annual 'Aid and Trade' commercial fair in Geneva. The standards were launched and presented as a forum event, attended by many of project consortium members. In April 2008, UN/OCHA circulated the standards at the Dubai International Humanitarian Aid and Development commercial fair.

The project will later develop and agree winterisation standards, supported by the Shelter Module project which will act as a test bed. The final Shelter Standards will be published in 2011, after conclusions from field testing have been integrated.

IFRC and UNHCR winterised tent

At the Shelter Meeting in November 2007, UNHCR presented the results of its survey of winterised tents currently available. In addition, UNHCR announced its intention to initiate a project to develop a winterised tent with IFRC. UNHCR and IFRC are both members of the Shelter Standards consortium and have contributed throughout the project in the development and direction of outputs.





Transitional Settlement and Reconstruction After Natural Disasters

Part of the DFID Programme with Shelter Centre

consensus

Shelter Centre has been revising with UN/OCHA the key operational guidelines for the sector. This revised edition will be published by the United Nations in May 2008 as *Transitional Settlement and Reconstruction After Natural Disasters*.

The guidelines represent an extensive revision of *Shelter after Disaster: Guidelines for Assistance* (UNDRO, 1982). The purpose of the revision has been to update the guidance and to place greater emphasis on strategic and programme design, coordination and implementation.

The aim of the guidelines is to support:

- **national and humanitarian stakeholders in agreeing common strategies of response**, from the emergency phase to durable solutions, where affected populations are supported in managing the risks they face;
- **national and humanitarian stakeholders in combining 12 assistance methods**, including non-food items and cash disbursements, into consistent and comprehensive programmes;
- **displaced populations through assistance to the six transitional settlement options**, including host families and collective centres; and
- **non-displaced populations through assistance to the six transitional reconstruction options**, including owner-occupiers and tenants.

The target audience consists of all stakeholders responding to rapid-onset disasters, and especially those in governments and humanitarian agencies responsible for planning and coordinating response.

Consensus approach

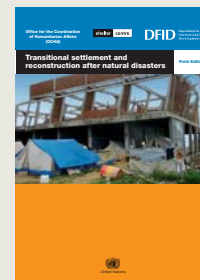
In 2007, the review panel met nine times to follow and contribute to the revision, chapter-by-chapter. The panel comprised representatives of United Nations bodies, the Red Cross Movement, international organisations, non-governmental organisations, as well as donors.

Practical toolkits were contributed by leading experts in the field, including a contributor to the 1982 guidelines.

The approach to the revised guidance was integrated by Shelter Centre into training for the Emergency Shelter Cluster of the IASC in 2007, as well as into both IFRC training for the shelter and construction delegates of the IFRC and National Societies of the Red Cross, and sector Shelter Training in 2008.

Next steps in 2008 and 2009

Following the launch of the guidelines in May 2008, they will be field tested and later revised in the light of the feedback received. The second edition of the guidelines will be published in 2009.





Camp Planning Guidelines

consensus

Shelter Centre is developing step-by-step guidance on establishing, upgrading and extending planned and self-settled camps for both refugees and internally displaced persons, following both conflicts and natural disasters.

The project was initiated at the request of Médecins Sans Frontières and builds upon a previous study by Shelter Centre of grid and contour planned camps, funded by USAID/OFDA.

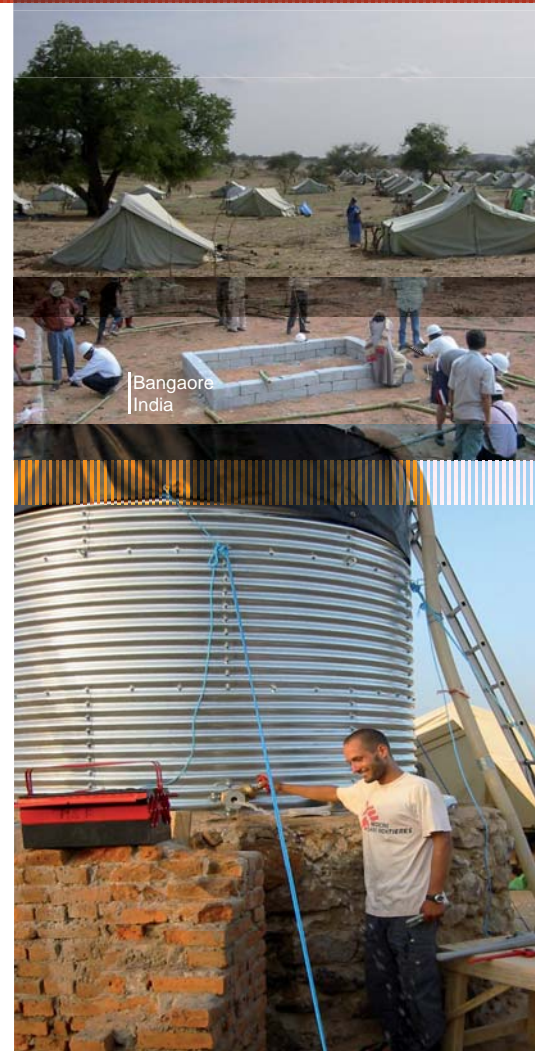
The guidelines follow the contour planning approach, whereby a camp is laid out to make use of natural gradients and topographic features, as is traditional in established towns and villages worldwide. In addition, guidance is offered on influx management through establishing way stations, transit centres and reception centres.

Activities in 2006 and 2007

Incomplete drafts were circulated and discussed at Shelter Meetings in 2006 and 2007. In December 2007, Shelter Centre hosted a meeting to discuss coordination between two other concurrent projects developing guidance on camps, both supported by the Camp Coordination and Camp Management Cluster of the IASC: the revision of the *Camp Management Toolkit*, involving NRC; and the development of *Camp Closure Guidelines*, led by ProAct.

Developments in 2008 and 2009

In 2008, the drafts of the camp planning guidelines will be developed into a fully funded project and a first edition for field testing is planned to distribution at the first Shelter Meeting of 2009. To date, commitments have been received to fund just over half of the project.





Shelter Library

Part of the DFID Programme with Shelter Centre

consensus

Shelter Library brings together into one searchable digital collection guidance, policy and good practice that has been put in the public domain by United Nations bodies, the Red Cross Movement, international organisations, non-governmental organisations and research groups.

The library contains the few publications available specific to the shelter sector, in addition to a broad resource for operations including material that is cross-cutting and from related sectors, such as on water supply and sanitation.

In 2005, Shelter Centre developed a proof-of-concept interagency digital sector library, and it has since achieved widespread use within the sector, including reference in many recent technical guidelines and internet-based humanitarian information services. A searchable offline version of this library is included on a CD that accompanies the technical guidelines *Transitional Settlement: Displaced Populations* (Corsellis and Vitale, 2005).

Activities in 2007

In 2007, the database of digital publications was developed and updated, along with a considerable hard copy library of guidance and grey literature, resulting in one of the leading information resources for the sector.

In addition, a completely new web service for the library was specified for development. In December, the development of this new service was begun by leading specialists in open source software.



Developments in 2008 and 2009

In 2008, the Shelter Library service will be launched first for testing, and by the November 2008 Shelter Meeting for use in support of sector operations.

Later in 2008, following additional requests by users, interest will be sought in the development of an offline version of the service for use in operations when internet connectivity is limited. If supported, this functionality is planned to be available in 2009.

My Library

Feedback from user profiling undertaken in Asia in 2007 indicated that shelter specialists wanted a way of quickly uploading documents that they usually share with their colleagues by email or web groups, as they were not available through formal services.

As a result, the 'My Library' function of the Shelter Library web service was specified as a complementary but separate service to the Shelter Library.





Shelter Training

Part of the DFID Programme with Shelter Centre

capacity

Shelter Training builds capacity in the humanitarian shelter sector both through the development and delivery of modular training courses, and through supporting these materials as a freely available resource for adaptation and use by non-specialist and specialist trainers.

Prior activities in 2006

The full-day Shelter Training workshop before the November 2006 Shelter Meeting, which was well attended by representative sector and training specialists, identified a clear need within the sector for:

- **at headquarters and regional levels**, the ongoing development of modular training delivered regularly; and
- **at national and operational levels**, modules that can be adapted easily to different operational considerations, also in support of monitoring and coordinating the implementation of strategic implementation plans.



Activities in 2007

The sector training developed by Shelter Centre staff over the past ten years with partners such as RedR and Oxfam was developed further into training for technical specialists for the Emergency Shelter Cluster.

Shelter Centre facilitated the 'Technical Specialists Training Workshop' immediately prior to Shelter Meeting, May 2007. As part of this project, the ESC agreed that Shelter Centre and other agencies might develop the training further.

Shelter Centre also contributed technical sessions to the 'Emergency Shelter Cluster Coordinators' Training' in Bangkok in October.

Shelter Centre integrated into the ESC training the options and methods for response that were developed as part of the revision with UN/OCHA of the key operational guidelines for the sector, to be published in May 2008 as *Transitional Settlement and Reconstruction After Natural Disasters*.

Developments in 2008

The ESC training was used by Shelter Centre as the basis for a three-day contribution to the 'IFRC Shelter Technical Training', held in March 2008 for the shelter and construction delegates of Red Cross National Societies.

Again, as part of this project IFRC agreed that Shelter Centre and other agencies might develop the training further.

As part of the DFID programme, Shelter Centre later revised the earlier training into:

- the first delivery of Shelter Training, supported by IFRC, to be held in May 2008 in Geneva immediately before the Shelter Meeting; and
- the online Shelter Training web service, making the modules freely available and supporting adaptation by both non-specialists and specialists, which is due for launch in the summer of 2008.



Shelter Community

Part of the DFID Programme with Shelter Centre

capacity

Shelter Community is a web service that aims to support agencies in recruiting available shelter specialists, as well as communications between sector specialists and their career development through:

- a register of shelter sector specialists, as members of the Shelter Community, enabling each member to access support information specific to their needs;
- sharing the location and contact details of each Shelter Community member, if they choose to make this information available to other members;
- sharing the interests and opinions in projects that each Shelter Community member is involved in reviewing, if they choose to make this information available to other members;
- sharing the availability for work of each Shelter Community member, if they choose to make this information available; and
- a listing of shelter sector vacancies, filtered from sources such as ReliefWeb and AlertNet, in addition to a service to post vacancies.

The integration of these services with other services onto one web platform presents additional opportunities to offer to the humanitarian community new and broader capacities and skills, including those seeking their first mission, as well as specialist resources, such as in building damage assessment, programme evaluation and GIS.

Prior activities 2004–2006

The need for a register of shelter specialists has been initially discussed within the plenary of Shelter Meetings and bilaterally with specialists and agencies since 2004. As a result of these discussions, the DFID sector support programme with Shelter Centre, 2006–2011, includes a project to support the development of the service specified. The project was progressed later through the further exploration of support to human resources and current mechanisms within agencies.

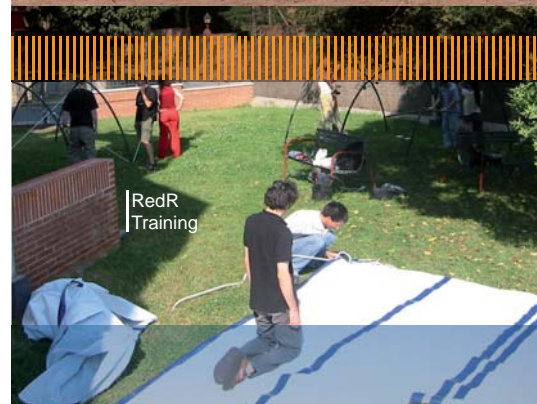
Activities in 2007

In 2007, structured interviews of potential users were undertaken at headquarters and regional levels to create profiles of different user types. Analysis of results led to the development of a broader and more integrated approach, recognising that registration might support members sharing their location and professional interests with other members, as well as supporting recruitment.

In addition, discussions were held with other organisations such as RedR that maintain similar registers of humanitarian specialists, so as to ensure complementarities of the Shelter Community services under development.

Developments in 2008

The Shelter Community services are due for launch in the summer of 2008, along with the other Shelter Centre web services. Comprehensive user 'Beta' testing will be undertaken prior to launch.





Shelter Interns

Part of the DFID Programme with Shelter Centre

The Shelter Interns programme aims both to increase the number of appropriate first mission candidates available to the humanitarian shelter sector, as well as to increase capacity within Shelter Centre to support the sector.

While some Shelter Interns approach Shelter Centre directly, more than half receive support from Engineers Without Borders. EWB collaborates with Shelter Centre in selecting Interns, advising on their fundraising, and delivering with RedR Cambridge basic practical training in humanitarian and developmental response, transitional settlement and reconstruction, water and sanitation, and field engineering.

Shelter Interns are managed closely to contribute their existing skills to Shelter Centre projects, including the presentation of guidelines; the expansion of web services; the development and testing of shelter NFIs; and the facilitation of meetings and reviews.

Interns develop a broad understand of sector principles and practice, as well as a detailed knowledge of their project areas, through their project work and access to the participants of the Shelter Meeting and review panels,

In coordination with the internships, since 2004 Shelter Centre collaborates with the Department of Engineering of the University of Cambridge to supervise students in undertaking their final thesis projects.

capacity

These studies offer foundations to basic technical aspects of shelter, such calculations for the loss of heat from tents in cold climates, and for the design of tent structures able to withstand wind and snow loads.

Activities in 2007

In 2007, nine interns supported by EWB, from five professions and five countries contributed to the Shelter Meetings, Camp Planning Guidelines, and Shelter Standards, Library and Training projects.

In addition, Shelter Centre ran a pilot internship for professionals with senior management experience in the commercial sector seeking to transfer their skills to the humanitarian sector.

Developments in 2008

Strong interest from former Shelter Interns to continue to contribute to the sector has led to the development of a project management structure that will link current interns with past interns. This adds capacity, continuity and new skills gained by former interns, most of whom work professionally for leading engineering companies.



Shelter Centre
Cambridge



Interns at Shelter Meeting

Shelter Centre's new web platform

The new web platform aims to support to the community of practice of the sector by integrating information available publicly from a variety of sources with existing and new services offered by Shelter Centre.

Shelter Library, Training and Meeting were developed and revised over the past four years through proof-of-concept services. The new web platform extends these existing services, using the latest web functionality, and adds to them the following features.

Shelter News

Shelter News will search all appropriate sources for relevant news pertaining to the humanitarian shelter sector. Shelter News will automatically integrate global news and up-to-date information from any country selected.

Shelter Events

Shelter Events will provide listings of events posted by members of the Shelter Community, including global and local meetings, workshops and training events.



Shelter Projects

Shelter Projects will list projects that members of the Shelter Community review and collaborate in.

My Library

The My Shelter Library functionality will allow individuals to post publications both for their own use, and for sharing with others in the Shelter Community.

Shelter Training

Shelter Training will be extended to include image and diagram libraries as well as training offered by other organisations, to assist in the development of training materials for delivery at headquarters level, or in support of humanitarian operations.

Shelter Community

Shelter Community will comprise an online global community of sector specialists, and will support them in posting and finding jobs; reviewing projects; contacting each other; and sharing expertise and best practice.



Bangalore
India

RedR
Training

Participation in other initiatives during 2007

The support of Shelter Centre to the sector extends beyond the projects described on the previous pages. Participation with wider sector and inter-sector initiatives connects these other initiatives with the projects described previously, optimising collaboration, consensus and capacity. This support includes participation in the following:

Activities of the IASC Cluster process

Shelter Centre is a partner in three clusters of the IASC: the Camp Coordination and Camp Management Cluster; the Protection Cluster; and the Emergency Shelter Cluster. Shelter Centre participated both in the development of work plans and specific projects.

Plastic sheeting guidelines

In April, Oxfam hosted a review meeting of the project collaboration between Oxfam GB and IFRC to develop guidelines on the use of plastic sheeting in humanitarian response.

Engineers Without Borders (EWB) Clare Farm training course

Shelter Centre continued its active participation in these training events, run by EWB and RedR, through contributing to interactive lectures and hands-on shelter exercises. The course is directed at people starting out in humanitarian response and development.



The USAID/OFDA and InterAction Workshop on Shelter and Settlements

In September the first sector meeting in North America since 1996 was held in Washington DC, hosted by InterAction. At the invitation of OFDA, Shelter Centre presented on both sector services and sector development.

The UK Shelter Forum

In December, the second UK Shelter Forum was hosted by CARE in London. Shelter Centre was asked by the organisers to present its collaborative activities, including sector requirements for training. The Forum included reviews of projects discussed at Shelter Meeting.

The first meeting on camp guidance

In December, Shelter Centre, the Norwegian Refugee Council and ProAct jointly held a meeting on camp guidance they were developing. In attendance were IFRC, MSF and IOM, which represented the CCCM Cluster that funds the development of the guidance on camp management and closure.

Developments in 2008

Shelter Centre will maintain support to other existing and new sector initiatives, including projects to develop guidance on land tenure, led by UN-Habitat; closing camps, led by CARE and ProAct; and cash disbursement, led by Oxfam and IFRC.

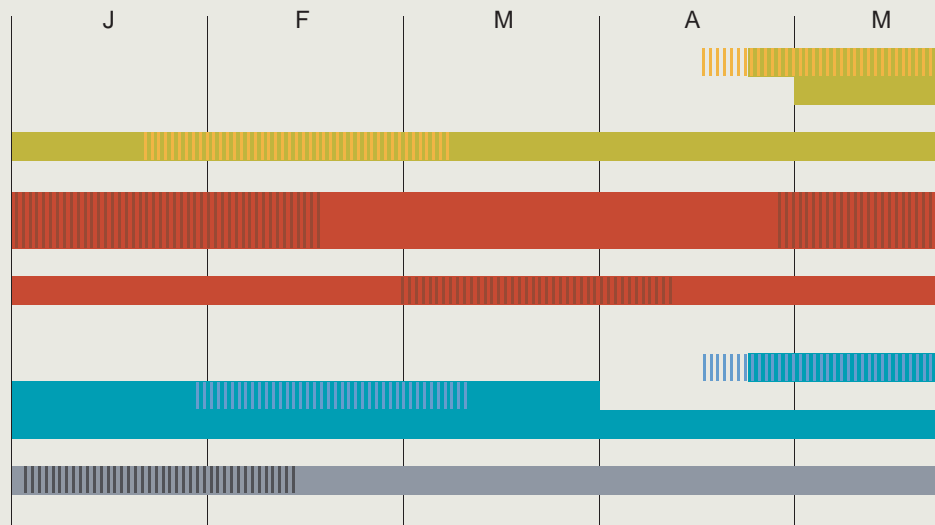


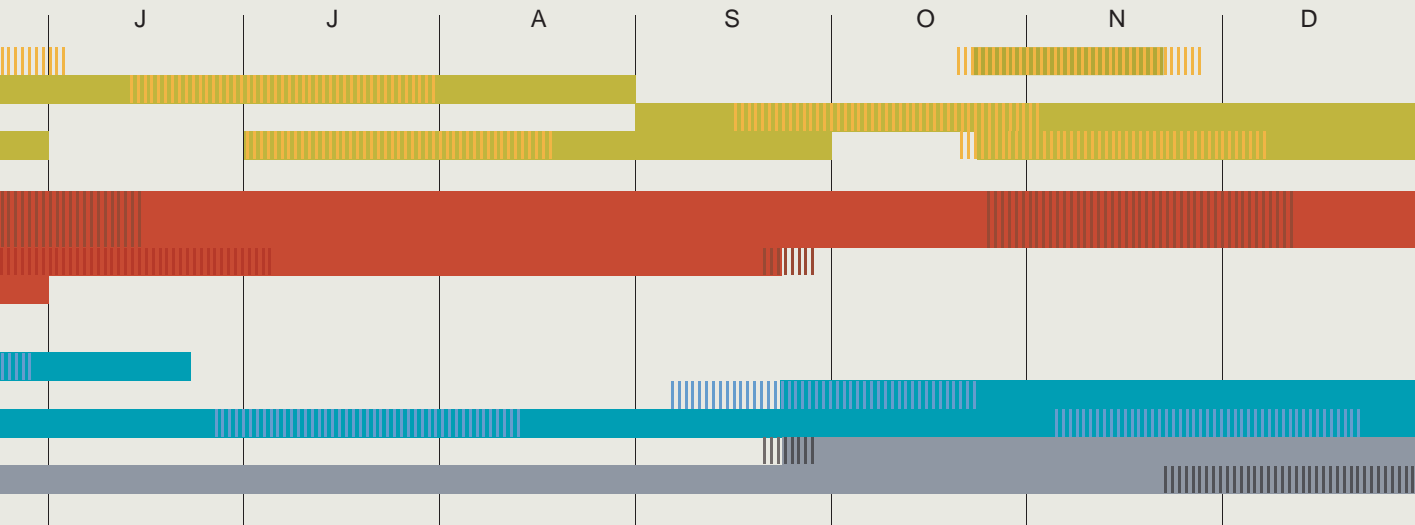
RedR
Training

Abeche
Chad

Shelter Centre's activities in 2007

-  Shelter Meeting
-  Shelter Funding
-  ESC Non-Food Items Standards Project
-  Shelter Standards and Module
-  Transitional Settlement and Reconstruction After Natural Disasters
-  Camp Planning Guidelines
-  Shelter Library
-  Shelter Training
-  Shelter Community
-  Shelter Interns
-  Shelter Centre's new web platform
-  Participation in other initiatives during 2007







Shelter Centre finances in 2007

The programme of activities undertaken by Shelter Centre in 2007 was financially supported by:

- programme funding through the Conflict and Humanitarian Fund of the Conflict, Humanitarian and Security Department of the Department of International Development of the British Government;
- the Office of US Foreign Disaster Assistance within USAID; and
- funding appealed for by the partner agencies, including Shelter Centre, of the IASC Emergency Shelter Cluster, which is co-led by IFRC and UNHCR.

The generous support of these donors allowed Shelter Centre to implement and manage its programme of activities effectively throughout 2007.

Shelter Centre is not-for-profit and registered in the United Kingdom. The Geneva activities of Shelter Centre are currently hosted by the IFRC at its headquarters.



Total income	GBP	289,126.80
Capital expenditure		
Office equipment	GBP	771.49
Project equipment	GBP	2,477.90
<i>Subtotal</i>	<i>GBP</i>	<i>3,249.39</i>
Recurring expenditure		
Overseas travel	GBP	9,976.21
Staff and consultancies	GBP	234,729.06
Office consumerables	GBP	21,992.39
<i>Subtotal</i>	<i>GBP</i>	<i>266,697.66</i>
Accounting and communication		
<i>Subtotal</i>	<i>GBP</i>	<i>19,290.51</i>
Total expenditure	GBP	289,237.56



Shelter Centre 2007

Staff

Tom Corsellis, Co-Director

Antonella Vitale, Co-Director

Neil Brighton, Office Manager

Vénus Maroun, Office Assistant

Matthew Slater, Systems Administrator

Leo Vita-Finzi, Technical Author

Interns and volunteers

Victoria Batchelor

James Brown

Hugh Earp

Nick Fearn

Kiri Langmead

Edward Murfitt

Sam Nelson

Mariam Niknejad

Ian Nimmo-Smith

Dan Reader

Sourour Reguigui

Janet Scott

Stephanie Smithers

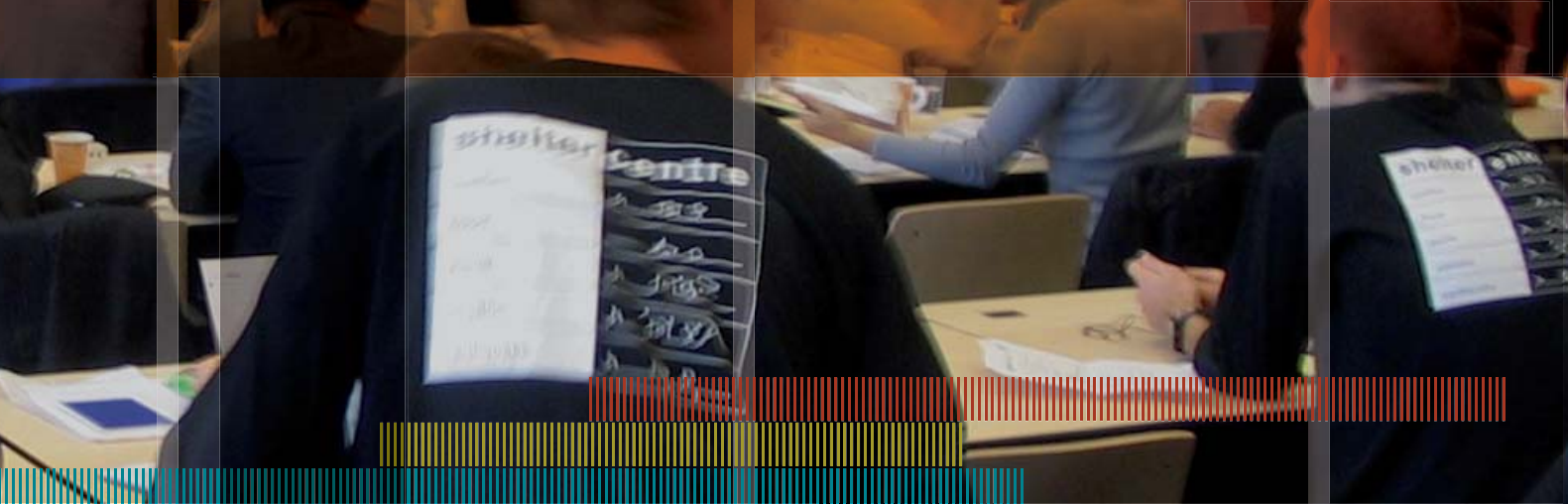
Jessica Spain

Yoke Pean Thye

Henry Travers

Peter Westlake

Thomas Whitworth



Contact details

Shelter Centre is located at the Humanitarian Centre, which is hosted by the University of Cambridge, UK.

Postal address

Humanitarian Centre
Fenner's
Gresham Road
Cambridge
CB1 2ES
UK

The Geneva activities of Shelter Centre are hosted by the International Federation of Red Cross and Red Crescent Societies at its headquarters in Switzerland.

Postal address

P.O. Box 372
CH-1211
Geneva 19
Switzerland

telephone +41 22 730 4520
fax +41 22 733 0395
email info@sheltercentre.org

Visiting address

Chemin des Crêts, 17
Petit-Saconnex
Geneva
Switzerland



shelter centre